



EMPIRE ICON

ULTRA-SERENE | ULTRA LAVISH

P A Y M E N T P L A N



EMPIRE ICON

ULTRA-SERENE | ULTRA LAVISH



BAHRIA TOWN
KARACHI



ENTRANCE



BEDROOM



BATHROOM

A Project By:



EMPIRE ICON
BUILDERS & DEVELOPERS

- 📍 Site Address: Plot No. 17, Centre Point Commercial, Near Grand Jamia Masjid Jinnah Avenue, Bahria Town, Karachi.
- 📍 Sales Office: Empire Business Center, 12-B, Suit No. 101 - 102, 1st Floor, Main Jinnah Avenue, Bahria Town, Karachi.
- 🌐 www.empireicon.com
- 📘 www.facebook.com/empire-icon





EMPIRE ICON

ULTRA-SERENE | ULTRA LAVISH



BAHRIA TOWN
KARACHI



A Project By:



EMPIRE ICON
BUILDERS & DEVELOPERS

- 📍 Site Address: Plot No. 17, Centre Point Commercial, Near Grand Jamia Masjid Jinnah Avenue, Bahria Town, Karachi.
- 📍 Sales Office: Empire Business Center, 12-B, Suit No. 101 - 102, 1st Floor, Main Jinnah Avenue, Bahria Town, Karachi.
- 🌐 www.empireicon.com
- 📘 www.facebook.com/empire-icon





EMPIRE ICON

ULTRA-SERENE | ULTRA LAVISH



BAHRIA TOWN
KARACHI



A Project By:



EMPIRE ICON
BUILDERS & DEVELOPERS

- 📍 Site Address: Plot No. 17, Centre Point Commercial, Near Grand Jamia Masjid Jinnah Avenue, Bahria Town, Karachi.
- 📍 Sales Office: Empire Business Center, 12-B, Suit No. 101 - 102, 1st Floor, Main Jinnah Avenue, Bahria Town, Karachi.
- 🌐 www.empireicon.com
- 📘 www.facebook.com/empire-icon





EMPIRE ICON

ULTRA-SERENE | ULTRA LAVISH



BAHRIA TOWN
KARACHI



A Project By:



EMPIRE ICON
BUILDERS & DEVELOPERS

- 📍 Site Address: Plot No. 17, Centre Point Commercial, Near Grand Jamia Masjid Jinnah Avenue, Bahria Town, Karachi.
- 📍 Sales Office: Empire Business Center, 12-B, Suit No. 101 - 102, 1st Floor, Main Jinnah Avenue, Bahria Town, Karachi.
- 🌐 www.empireicon.com
- 📘 www.facebook.com/empire-icon





**EMPIRE
ICON**

ULTRA-SERENE | ULTRA LAVISH



BAHRIA TOWN
KARACHI

PAYMENT PLAN

2

BEDROOMS APARTMENT
DRAWING, LOUNGE & MAID
(1 CAR PARKING)
TOTAL AREA: **1685** Sq. Ft

SILVER

LUXURY TYPE C
CORNER

MODE OF PAYMENT	AMOUNT
ON BOOKING (20 %)	2,864,500
DIGGING (10 %)	1,432,250
48 MONTHLY INSTALLMENTS (179,031 x 48)	8,593,500
ON POSSESSION (10 %)	1,432,250
TOTAL AMOUNT (UNIT PRICE)	14,322,500

EXTRA CHARGES:

WEST OPEN : 10%

CORNER : 10%

NOTE:

- ◆ The allottee shall pay cost of documentation. Utility services, sub-lease charges to the developer promptly on demand.
- ◆ The allottee shall pay all installment on due dates as per " PAYMENT SCHEDULE".
- ◆ All installment shall be paid before 10th of each month.
- ◆ Payment shall be made through cash/cheque/pay-order /Demand Draft in favour of the company.
- ◆ The allottee, in addition to normal prices shall pay extra charges for corner, West Open apartments.
- ◆ These extra charges shall be paid as per company policy.
- ◆ 10 % Discount on Lumpsum Payment.

A Project By:



EMPIRE ICON
BUILDERS & DEVELOPERS

- 📍 Site Address: Plot No. 17, Centre Point Commercial, Near Grand Jamia Masjid Jinnah Avenue, Bahria Town, Karachi.
- 📍 Sales Office: Empire Business Center, 12-B, Suit No. 101 - 102, 1st Floor, Main Jinnah Avenue, Bahria Town, Karachi.
- 🌐 www.empireicon.com
- 📘 www.facebook.com/empire-icon





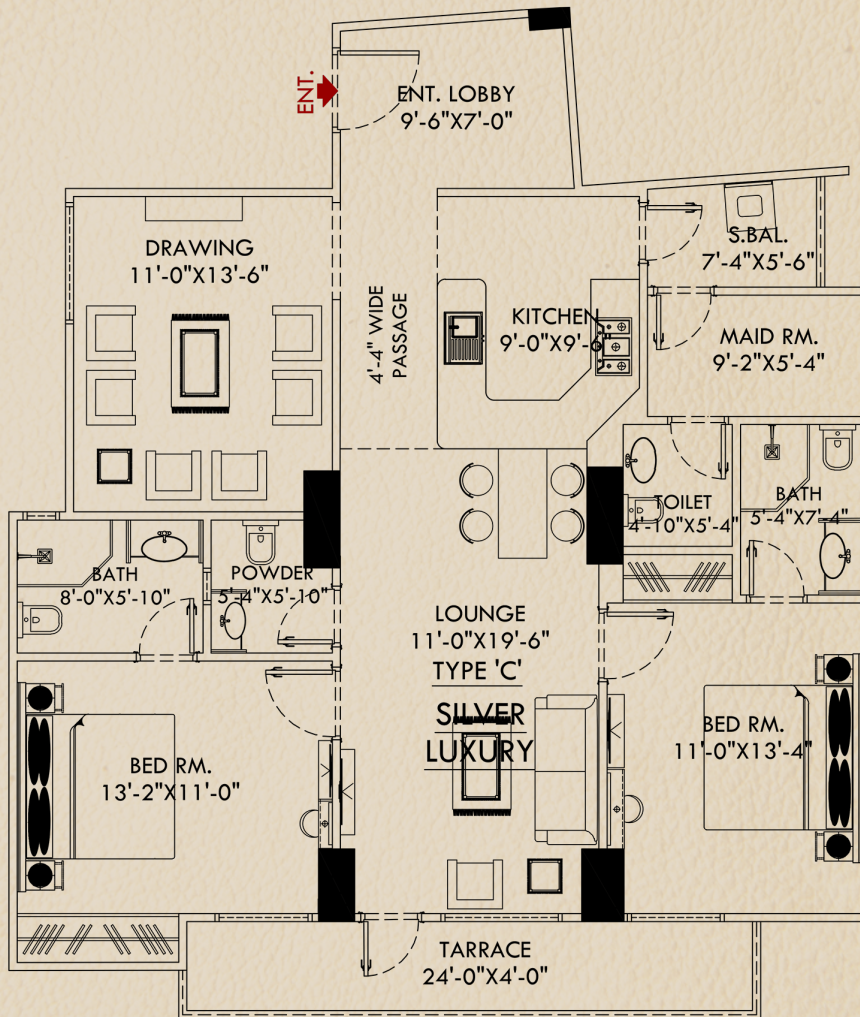
**EMPIRE
ICON**

ULTRA-SERENE | ULTRA LAVISH



BAHRIA TOWN
KARACHI

F L O O R P L A N



2

BEDROOMS APARTMENT
DRAWING, LOUNGE & MAID
(1 CAR PARKING)
TOTAL AREA: **1685** Sq. Ft

SILVER
LUXURY TYPE C
CORNER

A Project By:



EMPIRE ICON
BUILDERS & DEVELOPERS

- 📍 Site Address: Plot No. 17, Centre Point Commercial, Near Grand Jamia Masjid Jinnah Avenue, Bahria Town, Karachi.
- 📍 Sales Office: Empire Business Center, 12-B, Suit No. 101 - 102, 1st Floor, Main Jinnah Avenue, Bahria Town, Karachi.
- 🌐 www.empireicon.com 📘 www.facebook.com/empire-icon





**EMPIRE
ICON**

ULTRA-SERENE | ULTRA LAVISH



BAHRIA TOWN
KARACHI

PAYMENT PLAN

2

BEDROOMS APARTMENT
DRAWING & LOUNGE
(1 CAR PARKING)
TOTAL AREA: **1600** Sq. Ft

SILVER

LUXURY TYPE C
CORNER

MODE OF PAYMENT	AMOUNT
ON BOOKING (20 %)	2,720,000
DIGGING (10 %)	1,360,000
48 MONTHLY INSTALLMENTS (170,000 x 48)	8,160,000
ON POSSESSION (10 %)	1,360,000
TOTAL AMOUNT (UNIT PRICE)	13,600,000

EXTRA CHARGES:

WEST OPEN : 10%

CORNER : 10%

NOTE:

- ◆ The allottee shall pay cost of documentation. Utility services, sub-lease charges to the developer promptly on demand.
- ◆ The allottee shall pay all installment on due dates as per " PAYMENT SCHEDULE".
- ◆ All installment shall be paid before 10th of each month.
- ◆ Payment shall be made through cash/cheque/pay-order /Demand Draft in favour of the company.
- ◆ The allottee, in addition to normal prices shall pay extra charges for corner, West Open apartments.
- ◆ These extra charges shall be paid as per company policy.
- ◆ 10 % Discount on Lumpsum Payment.

A Project By:



EMPIRE ICON
BUILDERS & DEVELOPERS

- 📍 Site Address: Plot No. 17, Centre Point Commercial, Near Grand Jamia Masjid Jinnah Avenue, Bahria Town, Karachi.
- 📍 Sales Office: Empire Business Center, 12-B, Suit No. 101 - 102, 1st Floor, Main Jinnah Avenue, Bahria Town, Karachi.
- 🌐 www.empireicon.com
- 📘 www.facebook.com/empire-icon





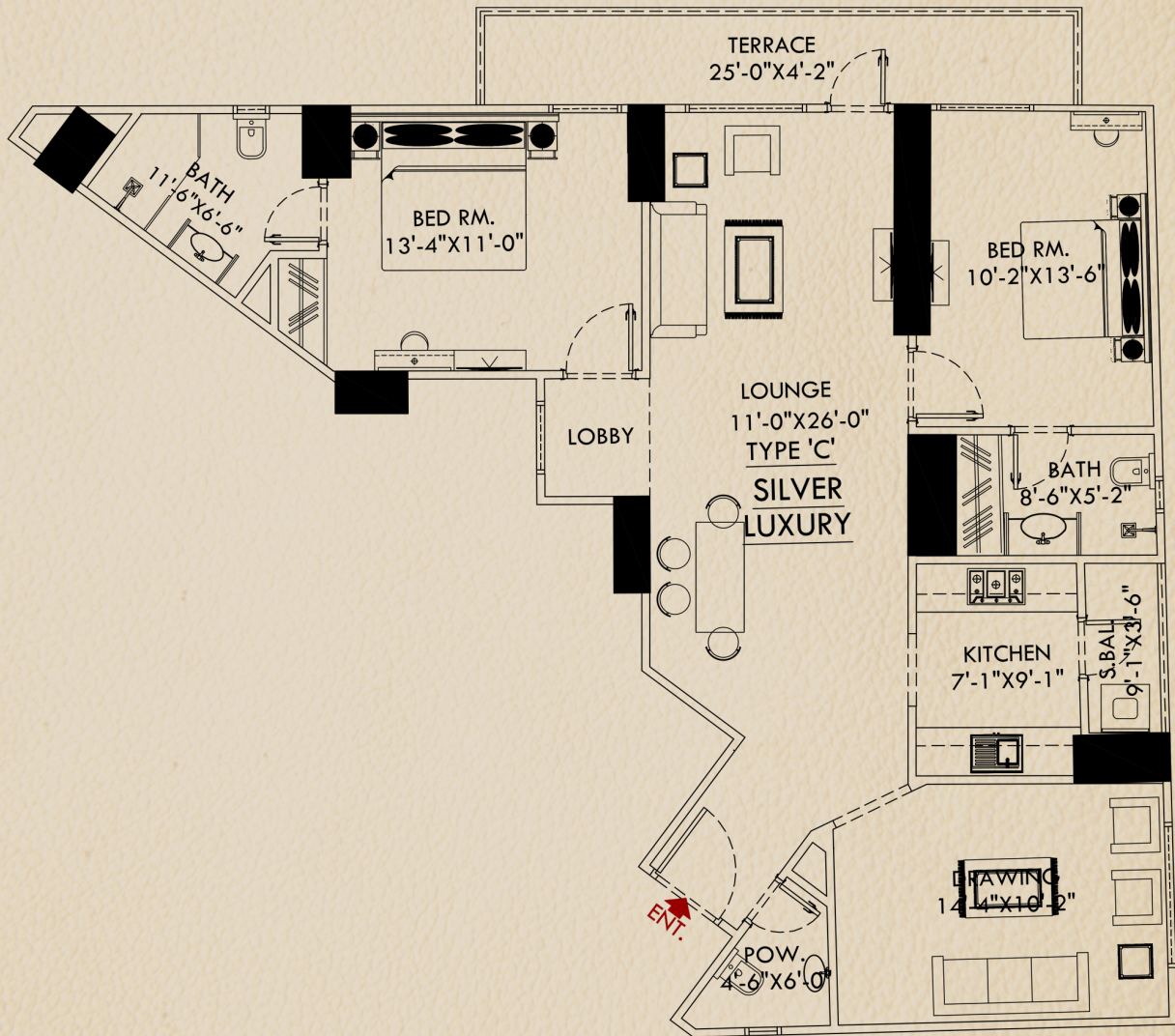
**EMPIRE
ICON**

ULTRA-SERENE | ULTRA LAVISH



BAHRIA TOWN
KARACHI

FLOOR PLAN



2

BEDROOMS APARTMENT
DRAWING & LOUNGE
(1 CAR PARKING)
TOTAL AREA: **1600** Sq. Ft

SILVER
LUXURY TYPE C
CORNER

A Project By:



EMPIRE ICON
BUILDERS & DEVELOPERS

- 📍 Site Address: Plot No. 17, Centre Point Commercial, Near Grand Jamia Masjid Jinnah Avenue, Bahria Town, Karachi.
- 📍 Sales Office: Empire Business Center, 12-B, Suit No. 101 - 102, 1st Floor, Main Jinnah Avenue, Bahria Town, Karachi.
- 🌐 www.empireicon.com
- 📘 www.facebook.com/empire-icon





**EMPIRE
ICON**

ULTRA-SERENE | ULTRA LAVISH



BAHRIA TOWN
KARACHI

PAYMENT PLAN

2

BEDROOMS APARTMENT
DRAWING & LOUNGE
(1 CAR PARKING)
TOTAL AREA: **1585** Sq. Ft

SILVER
LUXURY TYPE C

MODE OF PAYMENT	AMOUNT
ON BOOKING (20 %)	2,694,500
DIGGING (10 %)	1,347,250
48 MONTHLY INSTALLMENTS (168,406 x 48)	8,083,500
ON POSSESSION (10 %)	1,347,250
TOTAL AMOUNT (UNIT PRICE)	13,472,500

EXTRA CHARGES:

WEST OPEN : 10%

CORNER : 10%

NOTE:

- ◆ The allottee shall pay cost of documentation. Utility services, sub-lease charges to the developer promptly on demand.
- ◆ The allottee shall pay all installment on due dates as per " PAYMENT SCHEDULE".
- ◆ All installment shall be paid before 10th of each month.
- ◆ Payment shall be made through cash/cheque/pay-order /Demand Draft in favour of the company.
- ◆ The allottee, in addition to normal prices shall pay extra charges for corner, West Open apartments.
- ◆ These extra charges shall be paid as per company policy.
- ◆ 10 % Discount on Lumpsum Payment.

A Project By:



EMPIRE ICON
BUILDERS & DEVELOPERS

- 📍 Site Address: Plot No. 17, Centre Point Commercial, Near Grand Jamia Masjid Jinnah Avenue, Bahria Town, Karachi.
- 📍 Sales Office: Empire Business Center, 12-B, Suit No. 101 - 102, 1st Floor, Main Jinnah Avenue, Bahria Town, Karachi.
- 🌐 www.empireicon.com
- 📘 www.facebook.com/empire-icon





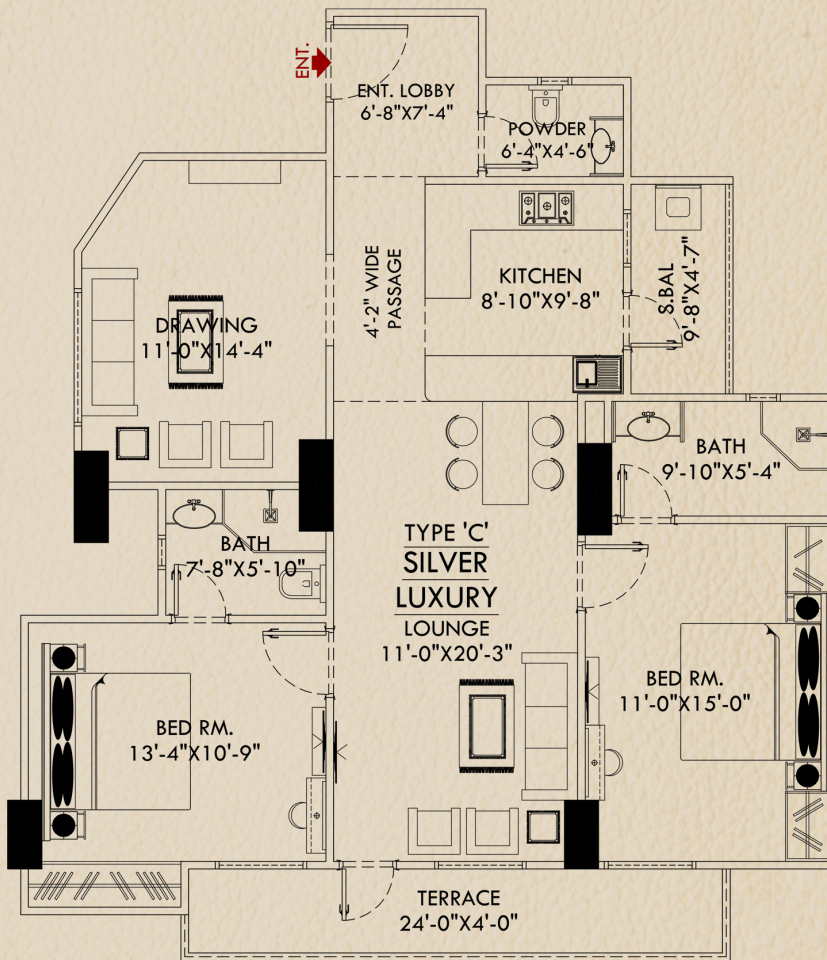
**EMPIRE
ICON**

ULTRA-SERENE | ULTRA LAVISH



BAHRIA TOWN
KARACHI

FLOOR PLAN



2

BEDROOMS APARTMENT
DRAWING & LOUNGE
(1 CAR PARKING)
TOTAL AREA: **1585** Sq. Ft

SILVER
LUXURY TYPE C

A Project By:



EMPIRE ICON
BUILDERS & DEVELOPERS

- 📍 Site Address: Plot No. 17, Centre Point Commercial, Near Grand Jamia Masjid Jinnah Avenue, Bahria Town, Karachi.
- 📍 Sales Office: Empire Business Center, 12-B, Suit No. 101 - 102, 1st Floor, Main Jinnah Avenue, Bahria Town, Karachi.
- 🌐 www.empireicon.com
- 📘 www.facebook.com/empire-icon





EMPIRE ICON

ULTRA-SERENE | ULTRA LAVISH



BAHRIA TOWN
KARACHI

FLOOR PLAN



2

BEDROOMS APARTMENT
DRAWING & LOUNGE
(1 CAR PARKING)

SILVER

LUXURY TYPE C

A Project By:



EMPIRE ICON
BUILDERS & DEVELOPERS

- 📍 Site Address: Plot No. 17, Centre Point Commercial, Near Grand Jamia Masjid Jinnah Avenue, Bahria Town, Karachi.
- 📍 Sales Office: Empire Business Center, 12-B, Suit No. 101 - 102, 1st Floor, Main Jinnah Avenue, Bahria Town, Karachi.
- 🌐 www.empireicon.com
- 📘 www.facebook.com/empire-icon

