



EMPIRE ICON

ULTRA-SERENE | ULTRA LAVISH

P A Y M E N T P L A N



**EMPIRE
ICON**

ULTRA-SERENE | ULTRA LAVISH



**BAHRIA TOWN
KARACHI**



A Project By:



EMPIRE ICON
BUILDERS & DEVELOPERS

- 📍 Site Address: Plot No. 17, Centre Point Commercial, Near Grand Jamia Masjid Jinnah Avenue, Bahria Town, Karachi.
- 📍 Sales Office: Empire Business Center, 12-B, Suit No. 101 - 102, 1st Floor, Main Jinnah Avenue, Bahria Town, Karachi.
- 🌐 www.empireicon.com
- 📘 www.facebook.com/empire-icon





EMPIRE ICON

ULTRA-SERENE | ULTRA LAVISH



BAHRIA TOWN
KARACHI



A Project By:



EMPIRE ICON
BUILDERS & DEVELOPERS

- 📍 Site Address: Plot No. 17, Centre Point Commercial, Near Grand Jamia Masjid Jinnah Avenue, Bahria Town, Karachi.
- 📍 Sales Office: Empire Business Center, 12-B, Suit No. 101 - 102, 1st Floor, Main Jinnah Avenue, Bahria Town, Karachi.
- 🌐 www.empireicon.com
- 📘 www.facebook.com/empire-icon





EMPIRE ICON

ULTRA-SERENE | ULTRA LAVISH



BAHRIA TOWN
KARACHI



A Project By:



EMPIRE ICON
BUILDERS & DEVELOPERS

- 📍 Site Address: Plot No. 17, Centre Point Commercial, Near Grand Jamia Masjid Jinnah Avenue, Bahria Town, Karachi.
- 📍 Sales Office: Empire Business Center, 12-B, Suit No. 101 - 102, 1st Floor, Main Jinnah Avenue, Bahria Town, Karachi.
- 🌐 www.empireicon.com
- 📘 www.facebook.com/empire-icon





EMPIRE ICON

ULTRA-SERENE | ULTRA LAVISH



BAHRIA TOWN
KARACHI



A Project By:



EMPIRE ICON
BUILDERS & DEVELOPERS

- 📍 Site Address: Plot No. 17, Centre Point Commercial, Near Grand Jamia Masjid Jinnah Avenue, Bahria Town, Karachi.
- 📍 Sales Office: Empire Business Center, 12-B, Suit No. 101 - 102, 1st Floor, Main Jinnah Avenue, Bahria Town, Karachi.
- 🌐 www.empireicon.com
- 📘 www.facebook.com/empire-icon





**EMPIRE
ICON**

ULTRA-SERENE | ULTRA LAVISH



BAHRIA TOWN
KARACHI

PAYMENT PLAN

5

BEDROOMS APARTMNET
LOUNGE & MAID
(2 CAR PARKING)
TOTAL AREA: **3192** Sq.Ft

DUPLEX
SILVER LUXURY CORNER
TYPE C

MODE OF PAYMNET	AMOUNT
ON BOOKING (20 %)	5,426,400
DIGGING (10 %)	2,713,200
48 MONTHLY INSTALLMENTS (339,150 x 48)	16,279,200
ON POSSESSION (10 %)	2,713,200
TOTAL AMOUNT (UNIT PRICE)	27,132,000

EXTRA CHARGES:

WEST OPEN : 10%

CORNER : 10%

NOTE:

- ◆ The allotte shall pay cost of documentation. Utility services, sub-lease charges to the developer promptly on demand.
- ◆ The allottee shall pay all installment on due dates as per " PAYMENT SCHEDULE".
- ◆ All installment shall be paid before 10th of each month.
- ◆ Payment shall be made through cash/cheque/pay-order /Demand Draft in favour of the company.
- ◆ The allotte, in addition to normal prices shall pay extras charges for corner, West Open apartments.
- ◆ These extra charges shall be paid as per company policy.
- ◆ 10 % Discount on Lumsum Payment.

A Project By:



EMPIRE ICON
BUILDERS & DEVELOPERS

- 📍 Site Address: Plot No. 17, Centre Point Commercial, Near Grand Jamia Masjid Jinnah Avenue, Bahria Town, Karachi.
- 📍 Sales Office: Empire Business Center, 12-B, Suit No. 101 - 102, 1st Floor, Main Jinnah Avenue, Bahria Town, Karachi.
- 🌐 www.empireicon.com
- 📘 www.facebook.com/empire-icon





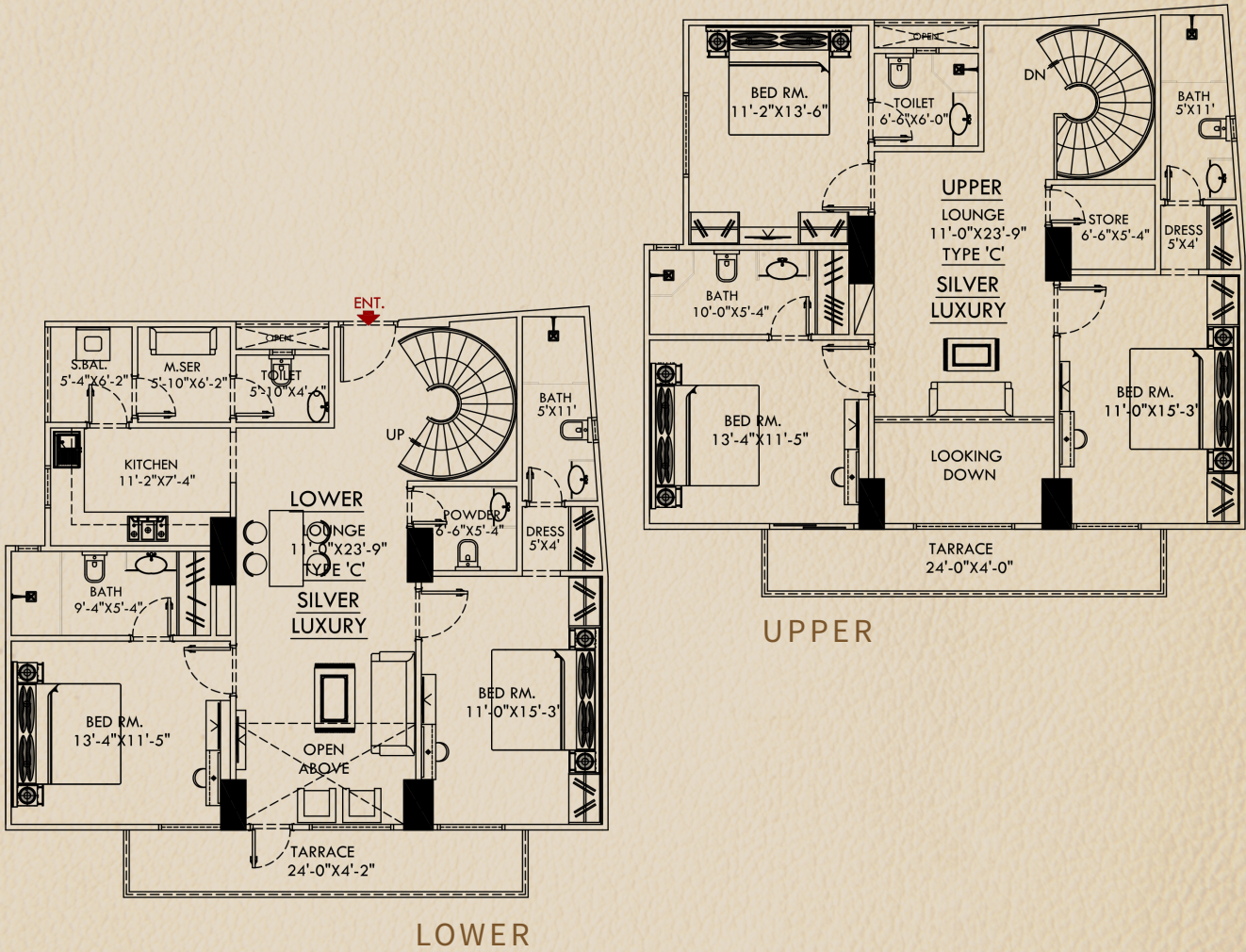
**EMPIRE
ICON**

ULTRA-SERENE | ULTRA LAVISH



BAHRIA TOWN
KARACHI

FLOOR PLAN



5

BEDROOMS APARTMENT
LOUNGE & MAID
(2 CAR PARKING)
TOTAL AREA: **3192** Sq.Ft

DUPLICATE
SILVER LUXURY CORNER
TYPE C

A Project By:



EMPIRE ICON
BUILDERS & DEVELOPERS

- 📍 Site Address: Plot No. 17, Centre Point Commercial, Near Grand Jamia Masjid Jinnah Avenue, Bahria Town, Karachi.
- 📍 Sales Office: Empire Business Center, 12-B, Suit No. 101 - 102, 1st Floor, Main Jinnah Avenue, Bahria Town, Karachi.
- 🌐 www.empireicon.com
- 📘 www.facebook.com/empire-icon





**EMPIRE
ICON**

ULTRA-SERENE | ULTRA LAVISH



BAHRIA TOWN
KARACHI

PAYMENT PLAN

5

BEDROOMS APARTMENT
LOUNGE & MAID
(2 CAR PARKING)
TOTAL AREA: **3076** Sq. Ft

DUPLEX
SILVER LUXURY TYPE C

MODE OF PAYMENT	AMOUNT
ON BOOKING (20 %)	5,229,200
DIGGING (10 %)	2,614,600
48 MONTHLY INSTALLMENTS (326,825 x 48)	15,687,600
ON POSSESSION (10 %)	2,614,600
TOTAL AMOUNT (UNIT PRICE)	26,146,000

EXTRA CHARGES:

WEST OPEN : 10%

CORNER : 10%

NOTE:

- ◆ The allottee shall pay cost of documentation. Utility services, sub-lease charges to the developer promptly on demand.
- ◆ The allottee shall pay all installment on due dates as per " PAYMENT SCHEDULE".
- ◆ All installment shall be paid before 10th of each month.
- ◆ Payment shall be made through cash/cheque/pay-order /Demand Draft in favour of the company.
- ◆ The allottee, in addition to normal prices shall pay extra charges for corner, West Open apartments.
- ◆ These extra charges shall be paid as per company policy.
- ◆ 10 % Discount on Lumpsum Payment.

A Project By:



EMPIRE ICON
BUILDERS & DEVELOPERS

- 📍 Site Address: Plot No. 17, Centre Point Commercial, Near Grand Jamia Masjid Jinnah Avenue, Bahria Town, Karachi.
- 📍 Sales Office: Empire Business Center, 12-B, Suit No. 101 - 102, 1st Floor, Main Jinnah Avenue, Bahria Town, Karachi.
- 🌐 www.empireicon.com
- 📘 www.facebook.com/empire-icon





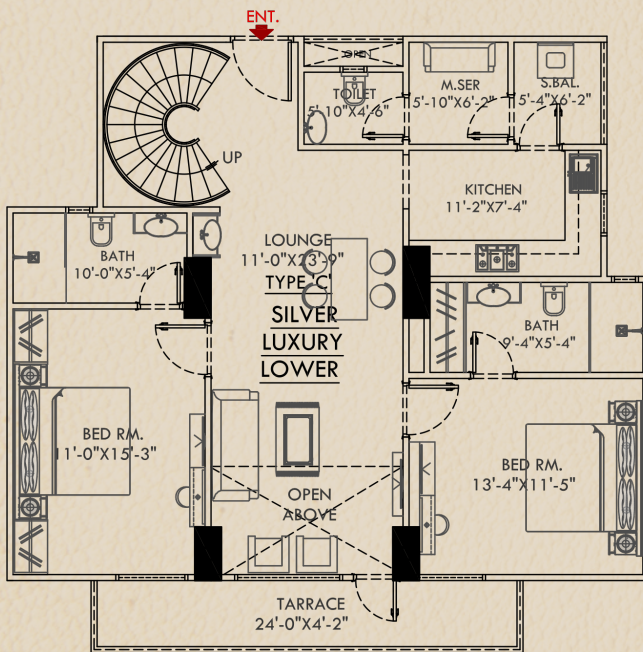
**EMPIRE
ICON**

ULTRA-SERENE | ULTRA LAVISH

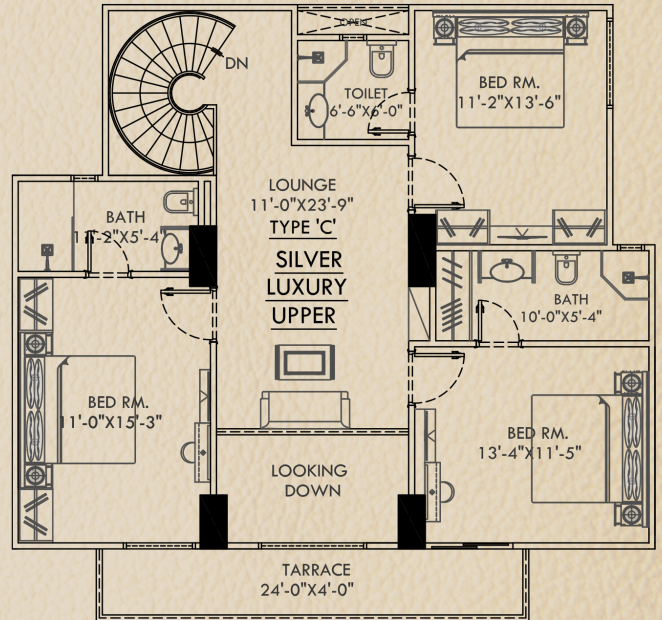


BAHRIA TOWN
KARACHI

FLOOR PLAN



LOWER



UPPER

5

BEDROOMS APARTMNET
LOUNGE & MAID
(2 CAR PARKING)
TOTAL AREA: **3076** Sq. Ft

DUPLEX
SILVER LUXURY TYPE C

A Project By:



EMPIRE ICON
BUILDERS & DEVELOPERS

- 📍 Site Address: Plot No. 17, Centre Point Commercial, Near Grand Jamia Masjid Jinnah Avenue, Bahria Town, Karachi.
- 📍 Sales Office: Empire Business Center, 12-B, Suit No. 101 - 102, 1st Floor, Main Jinnah Avenue, Bahria Town, Karachi.
- 🌐 www.empireicon.com
- 📘 www.facebook.com/empire-icon





**EMPIRE
ICON**

ULTRA-SERENE | ULTRA LAVISH



BAHRIA TOWN
KARACHI

PAYMENT PLAN

5

BEDROOMS APARTMNET
LOUNGE & MAID
(2 CAR PARKING)
TOTAL AREA: **3026** Sq.Ft

DUPLEX
SILVER LUXURY TYPE C

MODE OF PAYMNET	AMOUNT
ON BOOKING (20 %)	5,144,200
DIGGING (10 %)	2,572,100
48 MONTHLY INSTALLMENTS (321,513 x 48)	15,432,600
ON POSSESSION (10 %)	2,572,100
TOTAL AMOUNT (UNIT PRICE)	25,721,000

EXTRA CHARGES:

WEST OPEN : 10%

CORNER : 10%

NOTE:

- ◆ The allottee shall pay cost of documentation. Utility services, sub-lease charges to the developer promptly on demand.
- ◆ The allottee shall pay all installment on due dates as per " PAYMENT SCHEDULE".
- ◆ All installment shall be paid before 10th of each month.
- ◆ Payment shall be made through cash/cheque/pay-order /Demand Draft in favour of the company.
- ◆ The allottee, in addition to normal prices shall pay extras charges for corner, West Open apartments.
- ◆ These extra charges shall be paid as per company policy.
- ◆ 10 % Discount on Lumsum Payment.

A Project By:



EMPIRE ICON
BUILDERS & DEVELOPERS

- 📍 Site Address: Plot No. 17, Centre Point Commercial, Near Grand Jamia Masjid Jinnah Avenue, Bahria Town, Karachi.
- 📍 Sales Office: Empire Business Center, 12-B, Suit No. 101 - 102, 1st Floor, Main Jinnah Avenue, Bahria Town, Karachi.
- 🌐 www.empireicon.com
- 📘 www.facebook.com/empire-icon





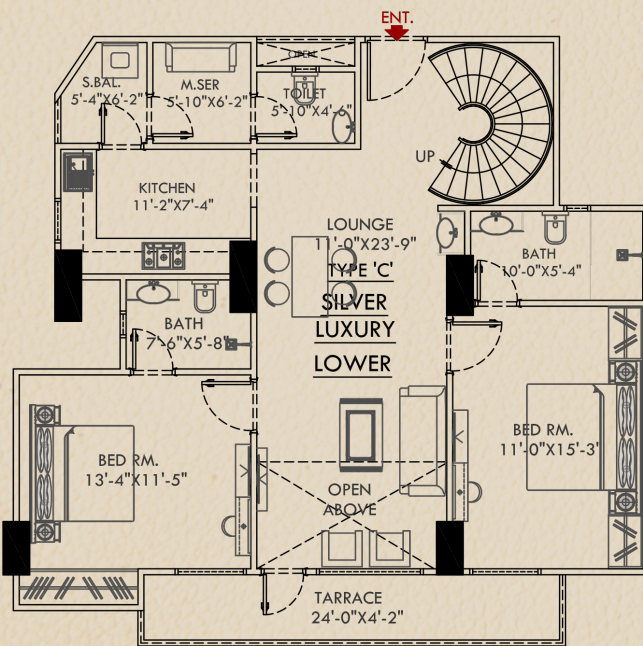
**EMPIRE
ICON**

ULTRA-SERENE | ULTRA LAVISH

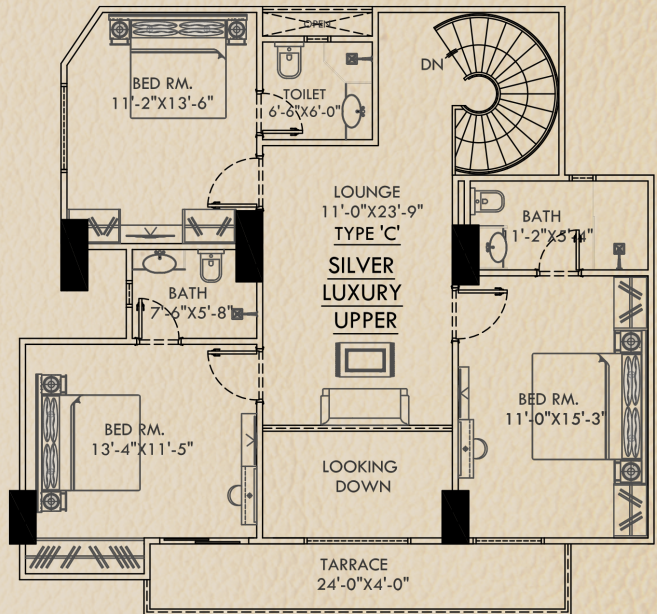


BAHRIA TOWN
KARACHI

FLOOR PLAN



LOWER



UPPER

5

BEDROOMS APARTMENT
LOUNGE & MAID
(2 CAR PARKING)
TOTAL AREA: **3026** Sq.Ft

DUPLEX
SILVER LUXURY TYPE C

A Project By:



EMPIRE ICON
BUILDERS & DEVELOPERS

- 📍 Site Address: Plot No. 17, Centre Point Commercial, Near Grand Jamia Masjid Jinnah Avenue, Bahria Town, Karachi.
- 📍 Sales Office: Empire Business Center, 12-B, Suit No. 101 - 102, 1st Floor, Main Jinnah Avenue, Bahria Town, Karachi.
- 🌐 www.empireicon.com
- 📘 www.facebook.com/empire-icon

