



# EMPIRE ICON

ULTRA-SERENE | ULTRA LAVISH

---

P A Y M E N T P L A N

---



**EMPIRE  
ICON**

ULTRA-SERENE | ULTRA LAVISH



**BAHRIA TOWN  
KARACHI**



**ENTRANCE**



**BED ROOM**



**BATHROOM**

A Project By:



**EMPIRE ICON**  
BUILDERS & DEVELOPERS

- 📍 Site Address: Plot No. 17, Centre Point Commercial, Near Grand Jamia Masjid Jinnah Avenue, Bahria Town, Karachi.
- 📍 Sales Office: Empire Business Center, 12-B, Suit No. 101 - 102, 1st Floor, Main Jinnah Avenue, Bahria Town, Karachi.
- 🌐 [www.empireicon.com](http://www.empireicon.com)
- 📘 [www.facebook.com/empire-icon](https://www.facebook.com/empire-icon)





# EMPIRE ICON

ULTRA-SERENE | ULTRA LAVISH



BAHRIA TOWN  
KARACHI



A Project By:



**EMPIRE ICON**  
BUILDERS & DEVELOPERS

- 📍 Site Address: Plot No. 17, Centre Point Commercial, Near Grand Jamia Masjid Jinnah Avenue, Bahria Town, Karachi.
- 📍 Sales Office: Empire Business Center, 12-B, Suit No. 101 - 102, 1st Floor, Main Jinnah Avenue, Bahria Town, Karachi.
- 🌐 [www.empireicon.com](http://www.empireicon.com)
- 📘 [www.facebook.com/empire-icon](https://www.facebook.com/empire-icon)





# EMPIRE ICON

ULTRA-SERENE | ULTRA LAVISH



BAHRIA TOWN  
KARACHI



A Project By:



**EMPIRE ICON**  
BUILDERS & DEVELOPERS

- 📍 Site Address: Plot No. 17, Centre Point Commercial, Near Grand Jamia Masjid Jinnah Avenue, Bahria Town, Karachi.
- 📍 Sales Office: Empire Business Center, 12-B, Suit No. 101 - 102, 1st Floor, Main Jinnah Avenue, Bahria Town, Karachi.
- 🌐 [www.empireicon.com](http://www.empireicon.com)
- 📘 [www.facebook.com/empire-icon](https://www.facebook.com/empire-icon)





# EMPIRE ICON

ULTRA-SERENE | ULTRA LAVISH



BAHRIA TOWN  
KARACHI



A Project By:



**EMPIRE ICON**  
BUILDERS & DEVELOPERS

- 📍 Site Address: Plot No. 17, Centre Point Commercial, Near Grand Jamia Masjid Jinnah Avenue, Bahria Town, Karachi.
- 📍 Sales Office: Empire Business Center, 12-B, Suit No. 101 - 102, 1st Floor, Main Jinnah Avenue, Bahria Town, Karachi.
- 🌐 [www.empireicon.com](http://www.empireicon.com)
- 📘 [www.facebook.com/empire-icon](https://www.facebook.com/empire-icon)





**EMPIRE  
ICON**

ULTRA-SERENE | ULTRA LAVISH



BAHRIA TOWN  
KARACHI

## PAYMENT PLAN

**4**

BEDROOMS APARTMENT  
DRAWING, LOUNGE & MAID  
(1 CAR PARKING)  
TOTAL AREA: **2330** Sq. Ft

**DIAMOND**

LUXURY TYPE A  
2 SIDE CORNER

MODE OF PAYMNET	AMOUNT
ON BOOKING (20 %)	3,961,000
DIGGING (10 %)	1,980,500
48 MONTHLY INSTALLMENTS ( 247,563 x 48)	11,883,000
ON POSSESSION (10 %)	1,980,500
<b>TOTAL AMOUNT (UNIT PRICE)</b>	<b>19,805,000</b>

### EXTRA CHARGES:

WEST OPEN : 10%

CORNER : 10%

### NOTE:

- ◆ The allottee shall pay cost of documentation. Utility services, sub-lease charges to the developer promptly on demand.
- ◆ The allottee shall pay all installment on due dates as per " PAYMENT SCHEDULE".
- ◆ All installment shall be paid before 10th of each month.
- ◆ Payment shall be made through cash/cheque/pay-order /Demand Draft in favour of the company.
- ◆ The allottee, in addition to normal prices shall pay extras charges for corner, West Open apartments.
- ◆ These extra charges shall be paid as per company policy.
- ◆ 10 % Discount on Lumsum Payment.

A Project By:



**EMPIRE ICON**  
BUILDERS & DEVELOPERS

- 📍 Site Address: Plot No. 17, Centre Point Commercial, Near Grand Jamia Masjid Jinnah Avenue, Bahria Town, Karachi.
- 📍 Sales Office: Empire Business Center, 12-B, Suit No. 101 - 102, 1st Floor, Main Jinnah Avenue, Bahria Town, Karachi.
- 🌐 [www.empireicon.com](http://www.empireicon.com)
- 📘 [www.facebook.com/empire-icon](https://www.facebook.com/empire-icon)





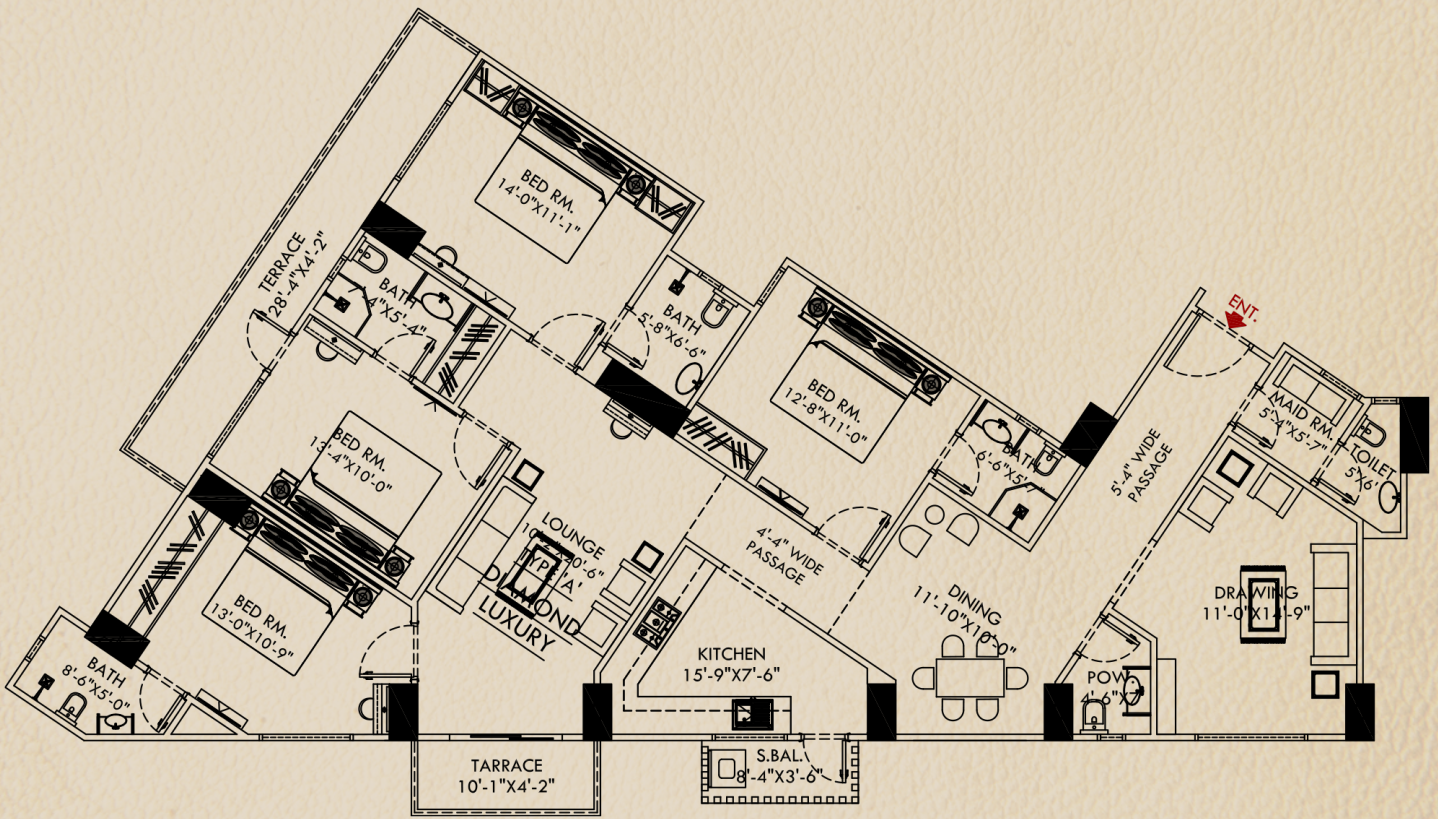
**EMPIRE  
ICON**

ULTRA-SERENE | ULTRA LAVISH



BAHRIA TOWN  
KARACHI

**FLOOR PLAN**



**4**

BEDROOMS APARTMENT  
DRAWING, LOUNGE & MAID  
(1 CAR PARKING)  
TOTAL AREA: **2330** Sq. Ft

**DIAMOND**  
LUXURY TYPE A  
2 SIDE CORNER

A Project By:



**EMPIRE ICON**  
BUILDERS & DEVELOPERS

- 📍 Site Address: Plot No. 17, Centre Point Commercial, Near Grand Jamia Masjid Jinnah Avenue, Bahria Town, Karachi.
- 📍 Sales Office: Empire Business Center, 12-B, Suit No. 101 - 102, 1st Floor, Main Jinnah Avenue, Bahria Town, Karachi.
- 🌐 [www.empireicon.com](http://www.empireicon.com)
- 📘 [www.facebook.com/empire-icon](https://www.facebook.com/empire-icon)





**EMPIRE  
ICON**

ULTRA-SERENE | ULTRA LAVISH



BAHRIA TOWN  
KARACHI

## FLOOR PLAN



4

BEDROOMS APARTMENT  
DRAWING, LOUNGE & MAID  
(1 CAR PARKING)

**DIAMOND**  
LUXURY TYPE A  
2 SIDE CORNER

A Project By:



**EMPIRE ICON**  
BUILDERS & DEVELOPERS

- 📍 Site Address: Plot No. 17, Centre Point Commercial, Near Grand Jamia Masjid Jinnah Avenue, Bahria Town, Karachi.
- 📍 Sales Office: Empire Business Center, 12-B, Suit No. 101 - 102, 1st Floor, Main Jinnah Avenue, Bahria Town, Karachi.
- 🌐 [www.empireicon.com](http://www.empireicon.com)
- 📘 [www.facebook.com/empire-icon](https://www.facebook.com/empire-icon)

